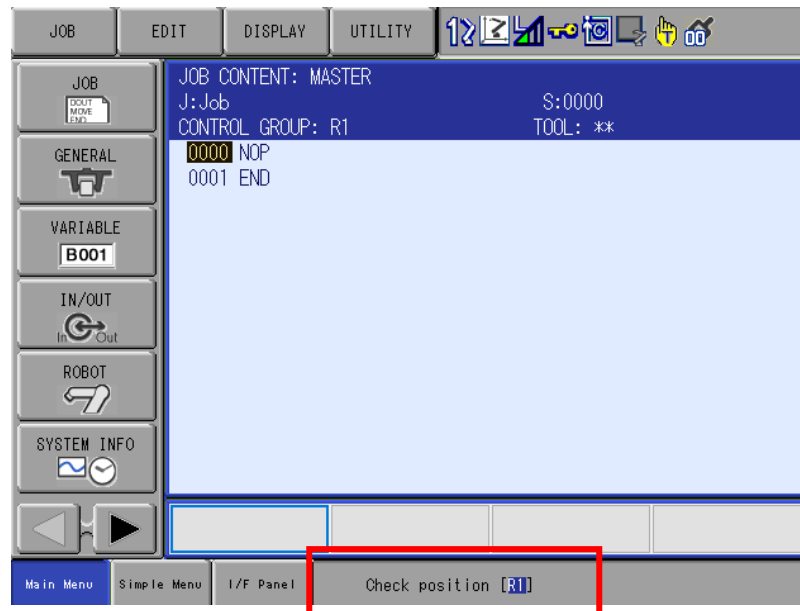


Recovery from “Check Position” Message

Introduction

This document describes how to recover from a “Check Position” message on the bottom of the pendant, as shown below.

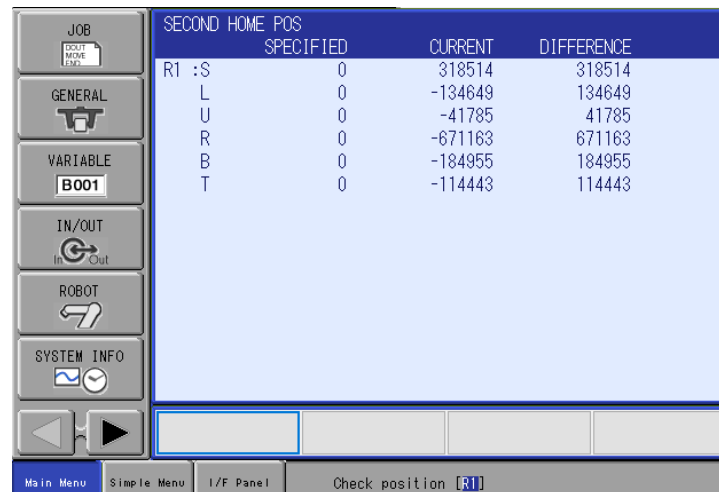
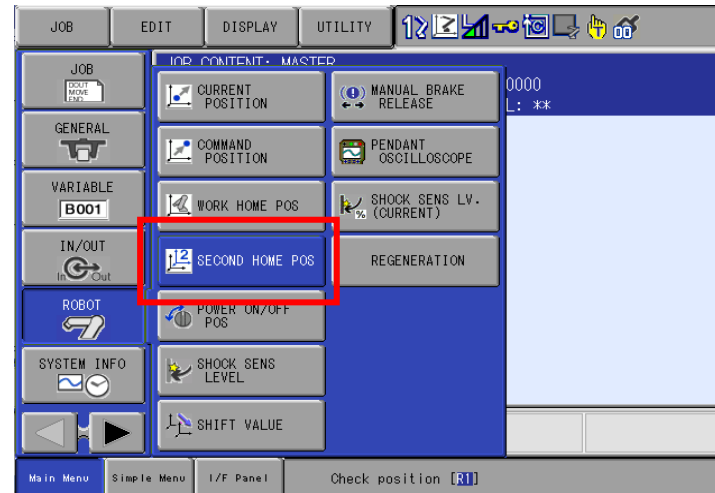


This document captures ideas, experiences, and informal recommendations from the Yaskawa Partner Support team. It is meant to augment – not supersede manuals or documentation from motoman.com. Please contact the Partner Support team at partnersupport@motoman.com for updates or clarification.

Recovery Procedure

NOTE: This procedure can be completed in any security level with no outstanding alarms.

1. Select ROBOT and then SECOND HOME POS.



This document captures ideas, experiences, and informal recommendations from the Yaskawa Partner Support team. It is meant to augment – not supersede manuals or documentation from motoman.com. Please contact the Partner Support team at partnersupport@motoman.com for updates or clarification.

- Default SPECIFIED position “0” in column. The orientation of robot/station will vary based upon model.
- SPECIFIED position can be modified if needed to accommodate for cell layout

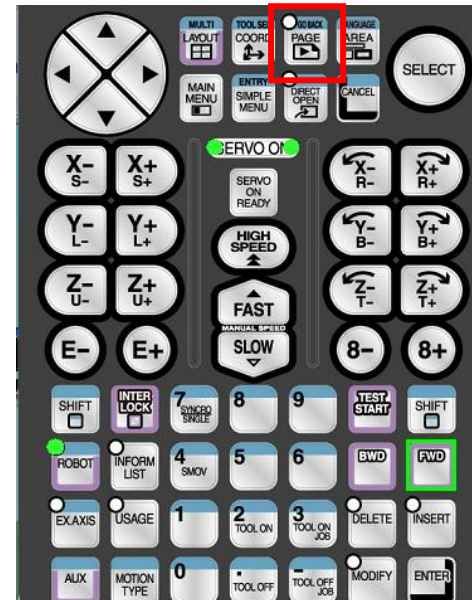
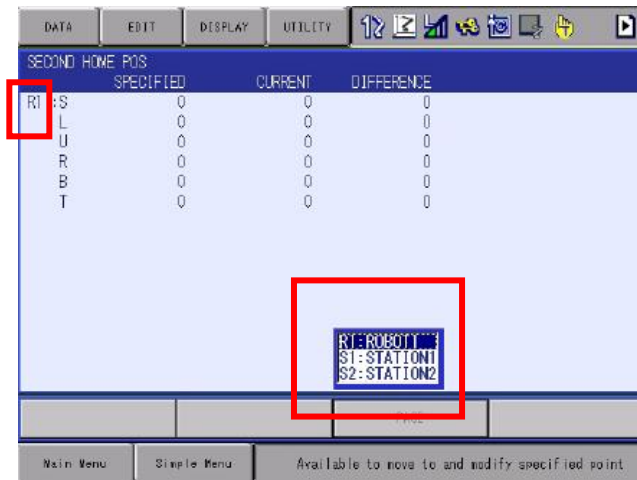
	SPECIFIED	CURRENT	DIFFERENCE
R1 :S	0	318514	318514
L	0	-134649	134649
U	0	-41785	41785
R	0	-671163	671163
B	0	-184955	184955
T	0	-114443	114443

2. If this is a single robot without an external axis, skip to step 5. Controllers with multiple groups(robot(s) and/or station(s)), continue to step 3.
3. Confirm origin of Check position, highlighted in message.



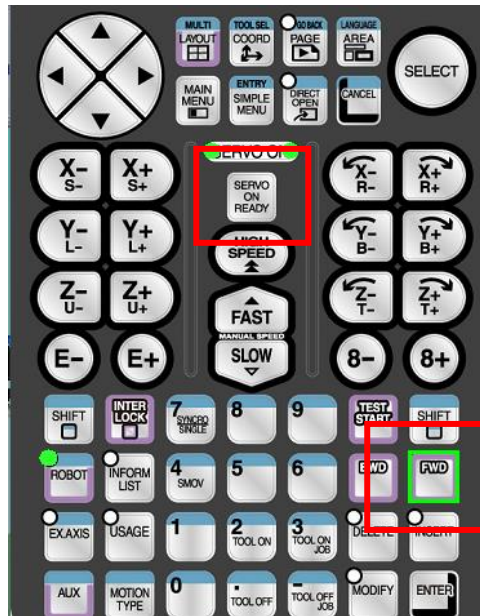
This document captures ideas, experiences, and informal recommendations from the Yaskawa Partner Support team. It is meant to augment – not supersede manuals or documentation from motoman.com. Please contact the Partner Support team at partnersupport@motoman.com for updates or clarification.

- Use the PAGE icon on the lower screen or the teach pendant PAGE key to select the group highlighted in the message.
 - Selected group shows in top left corner



This document captures ideas, experiences, and informal recommendations from the Yaskawa Partner Support team. It is meant to augment – not supersede manuals or documentation from motoman.com. Please contact the Partner Support team at partnersupport@motoman.com for updates or clarification.

- Engage servos and hold the FWD key until robot DIFFERENCE column reads all "0"
 - Robot will move to SPECIFIED position.
 - Use caution when moving the robot. Be aware of possible interference.
 - Manual JOINT jogging may be required to avoid interferences to complete motion to the SPECIFIED position
 - Cartesian motion (Robot, User, and Tool) may not work with Check position message



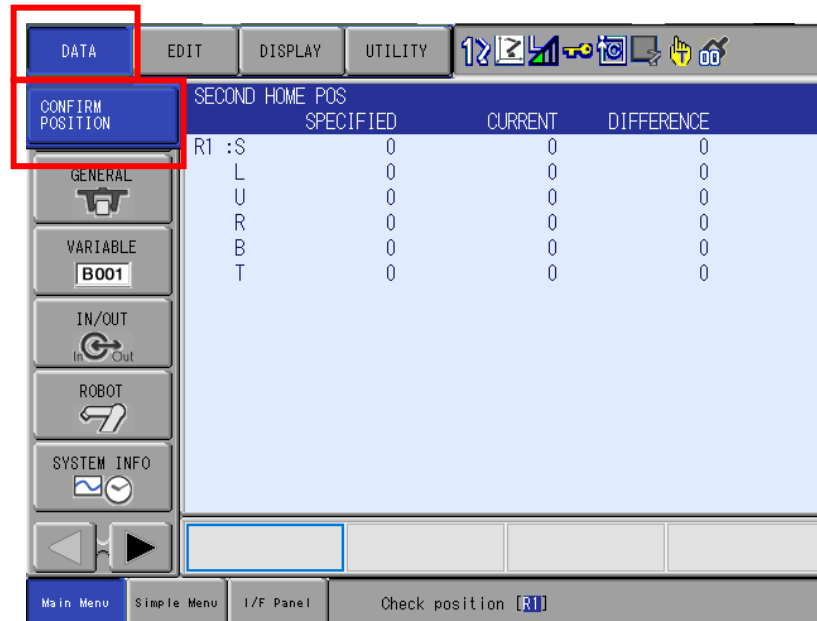
The image shows a screenshot of the robot's display screen. The screen displays a table titled 'SECOND HOME POS' with columns for 'SPECIFIED', 'CURRENT', and 'DIFFERENCE'. The 'DIFFERENCE' column is highlighted with a red box. The table data is as follows:

	SPECIFIED	CURRENT	DIFFERENCE
R1 :S	0	0	0
L	0	0	0
U	0	0	0
R	0	0	0
B	0	0	0
T	0	0	0

The screen also shows various menu options on the left side, including 'JOB', 'GENERAL', 'VARIABLE', 'IN/OUT', 'ROBOT', and 'SYSTEM INFO'. The bottom status bar indicates 'Check position R1'.

This document captures ideas, experiences, and informal recommendations from the Yaskawa Partner Support team. It is meant to augment – not supersede manuals or documentation from motoman.com. Please contact the Partner Support team at partnersupport@motoman.com for updates or clarification.

6. Press DATA in top left of display screen and CONFIRM POSITION



This document captures ideas, experiences, and informal recommendations from the Yaskawa Partner Support team. It is meant to augment – not supersede manuals or documentation from motoman.com. Please contact the Partner Support team at partnersupport@motoman.com for updates or clarification.

7. The Check position message will change to Home Position checked. If the Check Position message remains, multiple groups may need confirmed. Repeat steps with remaining group(s) requiring position check.

